



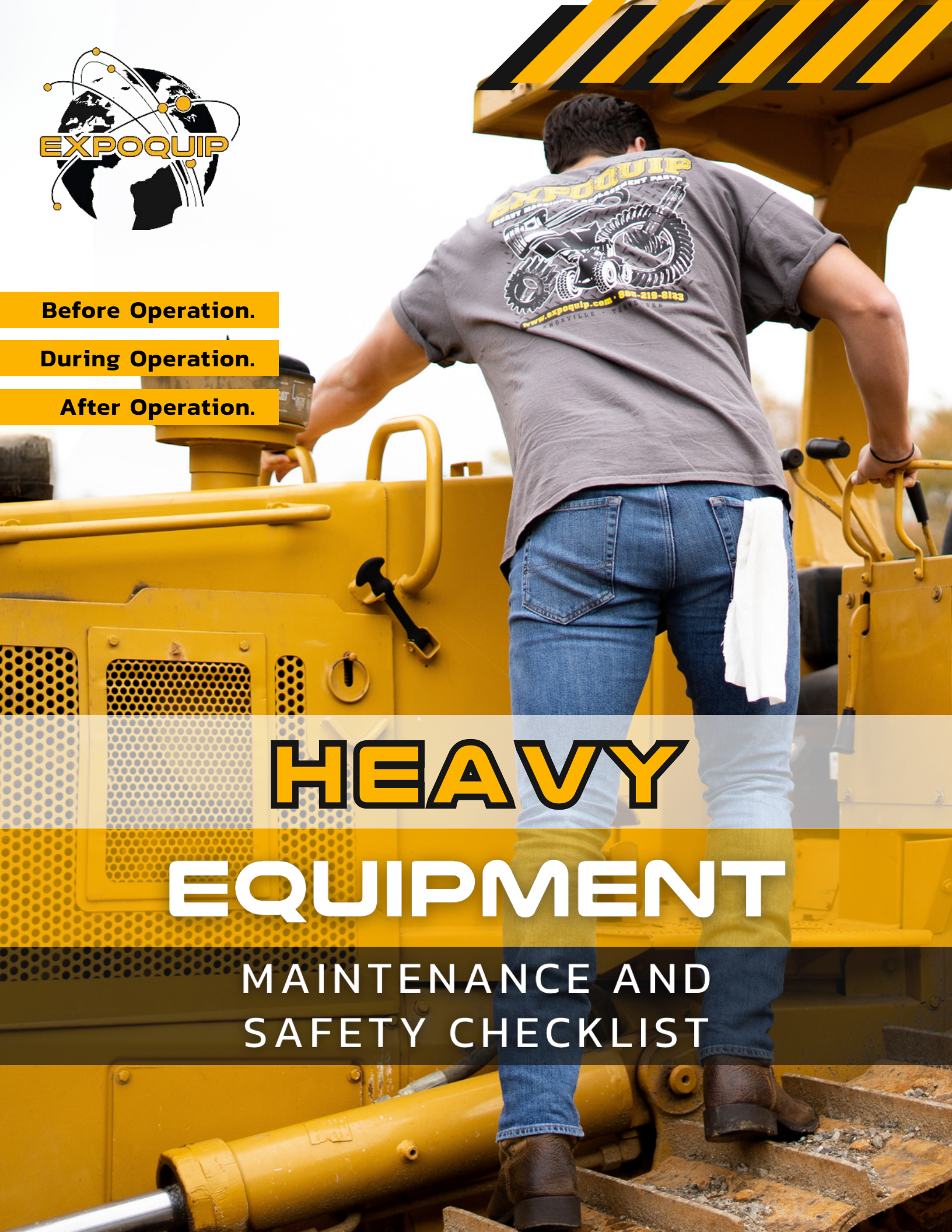
Before Operation.

During Operation.

After Operation.

HEAVY EQUIPMENT

MAINTENANCE AND
SAFETY CHECKLIST



EXPOQUIP

At Expoquip, we believe in safety and satisfaction for all of our clients.

That's why we're providing you with a safety checklist to ensure your safety and the safety of your equipment every time you use it.

You'll find a checklist for before, during, and after operation.



BEFORE OPERATION

GENERAL INSPECTION

- Review the operator's manual and safety guidelines.
- Verify proper training and certification.
- Confirm the equipment's maintenance and inspection records are up-to-date.
- Check if the work area is clear of bystanders and obstacles.

EXTERNAL INSPECTION

- Inspect the overall condition of the equipment for visible damage or defects.
- Examine tires or tracks for wear, damage, and proper inflation.
- Ensure lights, signals, and warning devices are functional.
- Confirm the presence of reflective markings for visibility.

FLUID LEVELS

- Check fuel, oil, hydraulic fluid, and coolant levels, topping off as needed.
- Inspect for leaks around hydraulic lines and fittings

EXPOQUIP

CABIN AND CONTROLS

- Familiarize yourself with the location and operation of all controls, switches, and safety features.
- Ensure the cabin is clean, well-ventilated, and free from obstructions.
- Verify the condition of mirrors, windows, and windshield wipers

SAFETY GEAR

- Wear required personal protective equipment (PPE), including but not limited to a hard hat, high-visibility vest, steel-toed boots, and hearing protection.
- Secure any loose clothing or accessories

DURING OPERATION

VISUAL CHECKS

- Continuously scan the work area for potential hazards or obstructions in front of, beside, and behind the equipment.
- Maintain clear visibility of the equipment's surroundings.

SAFE SPEED

- Operate the equipment at a safe and controlled speed, especially during turns and on uneven terrain.
- Pay attention to speed limits and load capacity.

COMMUNICATION

- Establish clear communication with other workers, especially when operating in areas with limited visibility or high noise levels.
- Use proper hand signals or communication devices when working with spotters or other personnel.

EXPOQUIP

GROUND CONDITIONS

- Continuously assess the ground conditions for stability and suitability to support the equipment's weight.
- Be cautious when operating on slopes, wet terrain, or loose soil.

CLEAR PATHWAYS

- Keep the work area clear of debris, obstacles, and other hazards that might interfere with the equipment's movement.

SEATBELT USAGE

- Always wear the provided seatbelt while operating, even on short trips.

DISMOUNT SAFELY

- When exiting the equipment, use three points of contact and exit on the side opposite to moving traffic if possible.

SHUTDOWN PROCEDURE

- Follow the correct shutdown procedure as outlined in the equipment's manual when leaving the equipment unattended.

AFTER OPERATION

POST-OPERATION INSPECTION

- Conduct a post-operation inspection to check for any damage, leaks, or other issues that may have arisen during use.
- Address any problems promptly or report them to the maintenance team.

SECURE EQUIPMENT

- If leaving the equipment unattended, secure it to prevent unauthorized use.
- Engage the parking brake and turn off the engine on stable ground.

EXPOQUIP

REPORTING

- Report any equipment issues or safety concerns to the appropriate supervisor or maintenance personnel.
- Document maintenance and inspections as required by regulations.

NOTES

Need to know more? Visit our website to learn more about what we do and how we can help you better operate and maintain your equipment.

CONTACT US
USA Toll Free #: 1.800.831.7002
International #: 1.865.219.8133
Fax #: 1.865.219.8334
sales@expoquip.com



**YOUR MOST
RELIABLE
PARTNER**

